



Why?

Main Project Aims:

- ▶ To provide a **learning model** and resources which actively **engages parents** to work collaboratively with pupils and teachers through an **immersive educational experience** that reflects the **Religions and Worldviews** approach (RWVs).
- ▶ To support parents and pupils in developing **key disciplinary skills** of investigation, **opening up dialogues** around personal and organised worldviews around the important **values and beliefs** of others in comparison to those that pupils bring with them from home.
- ▶ To **inform parents** of what and how their children may be learning by mirroring, modelling and enhancing the **effective classroom learning experiences** of RE through the RWV approach.
- ▶ To build **teacher confidence** in how to engage and support parents and their pupils in the classroom to develop these disciplinary skills.
- ▶ To promote **community** respect and cohesion with further stimulus and opportunity for parents to engage with effective **interfaith/ intercultural dialogue** in recognising shared similarities and connections with others in their community.

How?

The Project Process included:

Host a chosen object in their home.

None of these items are considered holy or deemed sacred and are not related to any form of worship but do have significance and special symbolism for certain people.



Complete an online Questionnaire.

Purposefully designed to encourage open dialogue around making links with key concepts and ideas linked to beliefs and values, rather than seeking detail of how others may use the object within their own faith.



Turning Responses into Resources

Supporting teacher CPD with a second session around using others' responses to recognise shared beliefs and values within and across religions and worldviews.



Supporting Schools to host an Event.

Providing resources and activity ideas to host their own celebratory events encouraging even further interfaith dialogue, learning and engagement with parents and the wider community.

Who?

1 Region

London

5 Boroughs

Redbridge
Barnet Brent
Ealing Bromley

10 Schools

50 Parents minimum

In the end, we had **74** parent responses!
 and
 with **3** very different School Events

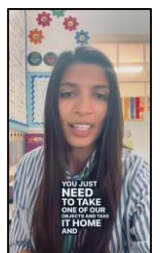
What?

5 Special Objects



and plus

5 bespoke videos



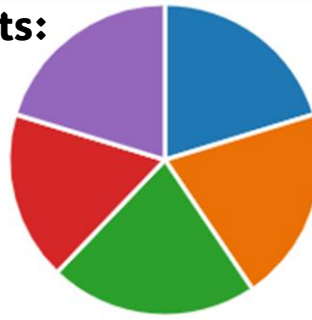
2 Event display packs
Classroom resources
teacher CPD workshops

74 parent responses spread evenly across the 5 objects:

1. Which object did you 'host' in your home?

[More Details](#)

● Artefact A	15
● Artefact B	15
● Artefact C	16
● Artefact D	13
● Artefact E	15



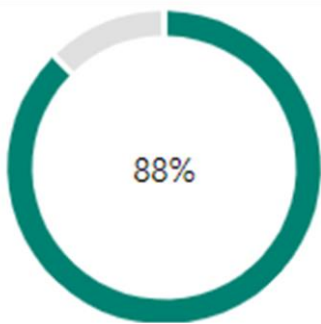
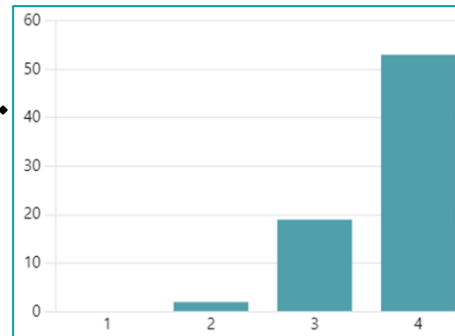
57 of responders gave their own examples they thought might be showing similar beliefs or values to their object.

These included a further **32** religious and cultural examples.

68% parents said they wanted to know and do more.

72% said they enjoyed this project.

The average rating was **3.69/4**



An incredible **88%** said this project really helped them appreciate how their child/ren may be learning RE in their lessons.

The average rating was **3.46/4**

“It was a nice activity to do as a family”

“Very informative and enlightening”

“It is important to learn about other religions' beliefs and search for similarities.”

“It is lovely to share this experience with my daughter. It encourages important conversation and discussion.”

100% teachers said they wanted to run the project again.

Accessible

Diverse

Celebratory

Community

