



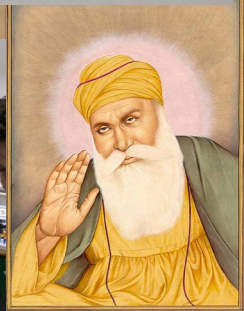
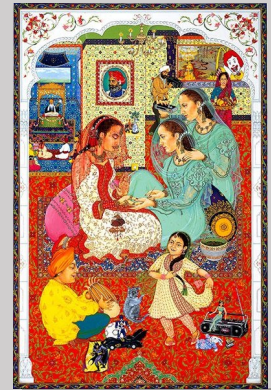
CULHAM ST GABRIEL'S

Becoming an RE teacher: PGCE route

- Post Graduate Certificate in Education
- Qualified Teacher Status
- University-based
- School and university partnership

Alexis Stones,
Subject Lead,

PGCE Religious Education
@UCL Institute of Education



Community of practice

- Learning & studying – RE, religions and worldviews
- Sharing resources
- Experience and expertise
- Visits
- Interests & commitments



Networks and research

- RE teachers, alumni
- Scholars
- Organisations



Schools

- Local
- Contrasting

