



Teaching School Hubs: Briefing Paper on Religious Education

For attention of Directors of Teaching School Hubs and their teams



The Ofsted Education Inspection Framework maintains that a key factor in assessing how effectively a curriculum is taught and assessed is:

Teachers have expert knowledge of the subjects that they teach. If they do not, they are supported to address gaps in their knowledge so that pupils are not disadvantaged by ineffective teaching.

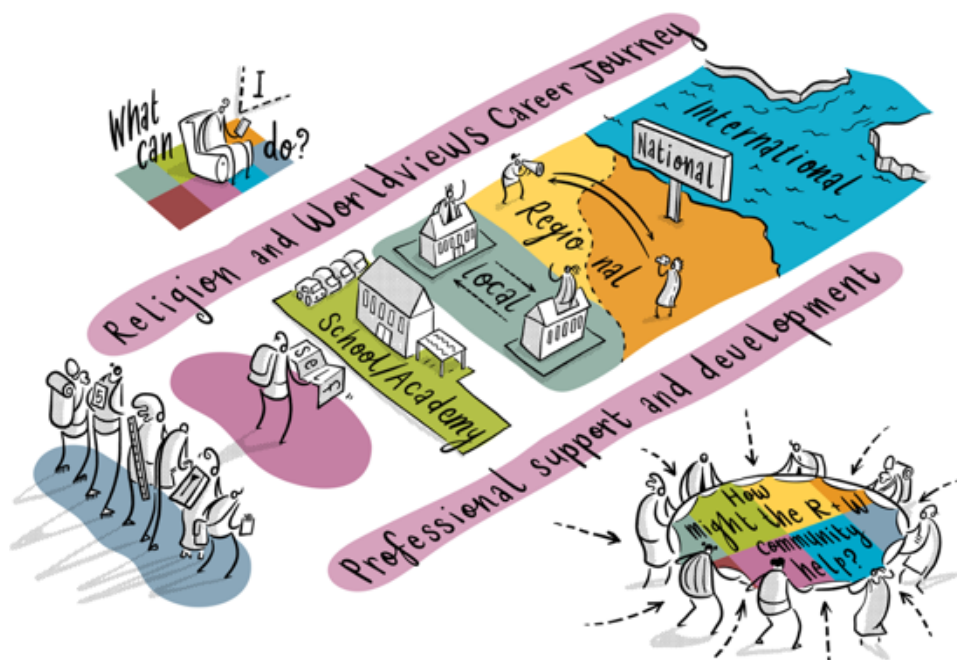
(Quality of Education, paragraph 208)

The **Ofsted Research Review** (2021) for Religious education (RE) says the subject should be taught by teachers who have secure subject and curriculum knowledge who foster pupils' interest in the subject and who are equipped to address pupils' misunderstandings. It notes that generic approaches to professional development can be unhelpful for RE because of the complexities involved in the subject. Ofsted identifies the variability in teacher training, particularly in the primary phase, as a challenge for all educationalists.

The Commission on RE (2018) recommended that "there should be a minimum of 12 hours of contact time for **Religion and Worldviews** for all forms of primary ITE including School Direct and other school-based routes".

Alongside this, the **RE Council of England and Wales**, including one of its member bodies the **National Association of Teachers of RE (NATRE)**, is calling for a **National Plan for Religious Education** and promoting a shift towards a religion and worldviews approach to knowledge and pedagogy.

This short briefing paper sets out some of the ways in which the RE (religion and worldviews) community can support **Teaching School Hubs**. This includes providing subject specific knowledge of policy about the subject, content knowledge, pedagogical knowledge and opportunities for teachers to engage with educational theory and research. This is not an exhaustive list. There will be additional specialist providers of support in some local and regional areas.



Focus Area	How the Religion and Worldviews Community can help and support your work	Useful Links
ITT	<p>For beginning teachers:</p> <ul style="list-style-type: none"> • Free self-study course for Primary • Free self-study courses for Secondary • Bespoke online webinars or face to face training from RE Today to support delivery of the CCF <p>For mentors:</p> <ul style="list-style-type: none"> • Free support materials for ITT mentors • Support for mentors through The Association of University Lecturers in Religion and Education (AULRE) 	<p>reonline.org.uk/professional-development/free-self-study-courses</p> <p>reonline.org.uk/professional-development/for-initial-teacher-training-providers</p> <p>aulre.org</p>
CPD	<p>All teachers:</p> <ul style="list-style-type: none"> • Membership of NATRE (National Association of Teachers of RE) • NATRE affiliated local groups and regular subject briefings from key organisations • Culham St Gabriel's Trust¹ Masters Scholarship • Farmington² Scholarships • #REChatUK (hosted by NATRE Twitter account) • Strictly RE Conference (hosted by NATRE) • Regional Hubs, including Learn Teach Lead RE (LTLRE) in some areas of the country • Courses and professional development provided by specialist external providers (some may be paid for) such as: <ul style="list-style-type: none"> – RE Today Services, local authorities' RE advisers, Church of England and Roman Catholic Dioceses <p>Middle and Senior Leaders:</p> <ul style="list-style-type: none"> • Get to know your local Standing Advisory Council on RE (SACRE) • Receive confidential advice on subject-specific issues through NATRE • Culham St Gabriel's Leadership Programme • RE Quality Mark Programme • RExChange 2022 Conference – real world research for real world classrooms 	<p>natre.org.uk/membership/membership</p> <p>cstg.org.uk/grants/individual/masters-scholarship</p> <p>farmington.ac.uk/index.php/farmington-scholarships</p> <p>natre.org.uk/about-natre/re-in-your-region</p> <p>ltlre.org</p> <p>nasacre.org.uk/database</p> <p>reonline.org.uk/leadership/leadership-programme</p> <p>reqm.org</p> <p>reonline.org.uk/research/rexchange-2022</p>

¹ **Culham St Gabriel's Trust** is an endowed charitable organisation whose vision is for a broad based critical reflective education in religion and worldviews contributing to a well-informed respectful, open society.

² **The Farmington Trust** is a charity supporting headteachers and teachers, with a particular focus on religious education.

Early Career Framework	<p>For early career teachers:</p> <ul style="list-style-type: none"> • Secondary New2RE programme – including monthly webinar • Free self-study courses for primary and secondary teachers <p>For mentors:</p> <p>See CPD referenced above</p>	<p>natre.org.uk/uploads/NATRE%20News/New2RE%20flyer%202021.pdf</p> <p>reonline.org.uk/professional-development</p>
Appropriate Body Services	<ul style="list-style-type: none"> • Receive newsletters from NATRE, REONLINE and The RE Council of England and Wales to ensure you are up to date with latest national developments in the subject. • Utilise local networks (see above) for support. 	<p>natre.org.uk</p> <p>reonline.org.uk</p> <p>religiouseducationcouncil.org.uk</p>
Research Schools within Teaching School Hubs	<ul style="list-style-type: none"> • Culham St Gabriel's Research Programme, including online library and resources, as well as grant funding • Research and data from NATRE • Links to TRS-UK (Theology and Religious Studies) • Farmington Scholarships • RExChange 2022 Conference – real world research for real world classrooms 	<p>reonline.org.uk/research</p> <p>cstg.org.uk</p> <p>trs.ac.uk</p>
National Professional Qualifications (NPQ)	<p>See sections above for support for NPQs in Leading Behaviour and Culture, Leading Teaching, Leading Teacher Development, Senior Leadership, Headship and Executive Leadership</p>	<p>See above</p>

This briefing paper has been produced jointly by:
The National Association of Teachers of RE,
The Religious Education Council of England and Wales and **RE Today Services**. Their work is supported by **Culham St Gabriel's Trust**.

Find more professional development opportunities from across the RE community:
reonline.org.uk/professional-development/be-inspired

